

# Event Analysis Package

Exaplog Process log analyzer helps optimize plant operation

## Analyzes DCS Event History to Help You Enhance Efficiency

The Exaplog Event Analysis Package provides tools for managers, engineers and supervising operators to analyze DCS plant historical logs, and helps balance the process and enhance efficiency. Exaplog uses trend graphs to measure process request - operator action "balance", and pie charts or tables to analyze event-type distributions, so helps you identify and reduce unimportant/consequential alarms, identify and improve inefficient operation sequences – and so balance the process and enhance efficiency.

## Enhance Process Stability: Balance Process Events and Operator Actions

The Event Balance Trend (EBT) shows the *numerical balance* between process requests (events such as alarms and messages) and operator actions (such as tag mode and setpoint changes), and the *relative timings* of event and operation peaks – which are indicators of process stability and controllability.

## When, Where, What (3W) Filters Help You Narrow Focus of Analysis

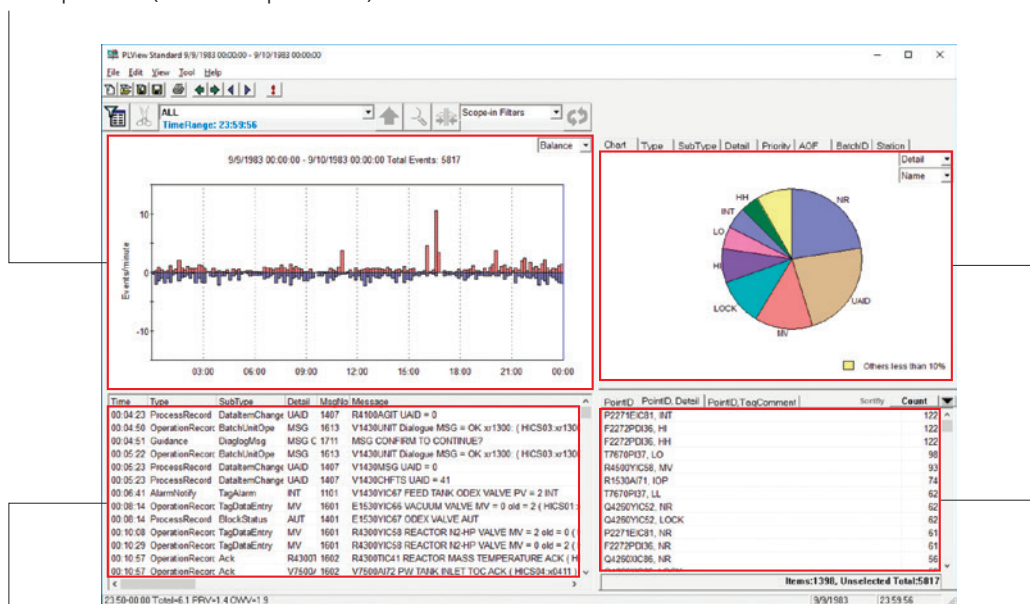
Filters allow you to set items to display, set 3W include/exclude conditions and scope – e.g. (time) span, station or event type – in order to deduce the cause of a process unbalance. Filter settings can be saved for reuse. You can sort tables by keys such as message type and station IDs.

### Event Balance Trend Window (When)

Lack of balance between process requests (+ axis) and operator actions (- axis) can indicate timing of process problems (areas for improvement).

### Category Sort Window (What)

Events sorted by category (e.g. alarm, process status change) can be displayed as a pie chart or table.



PL View

### Message Summary Window






Displays time of events, type, and detail in order of event occurrence.

### Point ID Sort Window (Where)

Displays events, sorted by frequency, with tag names/station IDs.

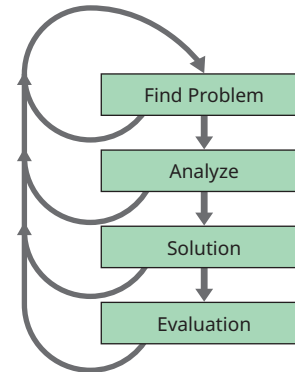
## Event Balance Trends Suggest Areas for Improvement

EBT patterns:

EBT Pattern	Pattern Type	Suspected Problem
	Balanced	No short term problem
	Excessive Notification	Redundant alarms/messages Unimportant alarms/messages
	Excessive Operation	Complex operation sequence Insufficient operator guidance
	Operator Work Overflow	Insufficient operator capability Complex operation sequence
	Inadequate Operation	Unstable process Complex operation sequence

## Continuous Improvement with Continuous Use

Using the package continuously helps you to optimize alarm settings, continuously improve process quality, safety, and productivity – and reduce costs.



**OpreX™**

Through the comprehensive OpreX portfolio of products, services, and solutions, Yokogawa enables operational excellence across the enterprise.

### Yokogawa Electric Corporation World Headquarters

9-32, Nakacho 2-chome, Musashino-shi, Tokyo 180-8750, Japan  
<https://www.yokogawa.com/>

### Yokogawa Corporation of America

12530 West Airport Blvd, Sugar Land, Texas 77478, USA  
<https://www.yokogawa.com/us/>

### Yokogawa Europe B. V.

Euroweg 2, 3825 HD Amersfoort, The Netherlands  
<https://www.yokogawa.com/eu/>

### Yokogawa Engineering Asia Pte. Ltd.

5 Bedok South Road, Singapore 469270, Singapore  
<https://www.yokogawa.com/sg/>

### Yokogawa China Co., Ltd.

Room 1801, Tower B, THE PLACE, No.100 Zunyi Road,  
 Changning District, Shanghai, China  
<https://www.yokogawa.com/cn/>

### Yokogawa Middle East & Africa B. S. C. (c)

P.O. Box 10070, Manama, Building 577, Road 2516,  
 Busaiteen 225, Muharraq, Kingdom of Bahrain  
<https://www.yokogawa.com/bh/>

### Trademarks

The names of corporations, organizations, products and logos herein are either registered trademarks or trademarks of Yokogawa Electric Corporation and their respective holders.

Subject to change without notice.

All Rights Reserved. Copyright © 1999, Yokogawa Electric Corporation

Visit our website at:

<https://www.yokogawa.com/solutions/solutions/asset-operations-and-optimization/alarm-management/alarm-analysis-exaplog/>



Represented by:

Printed in Japan, 308(KP) [Ed : 18/b]